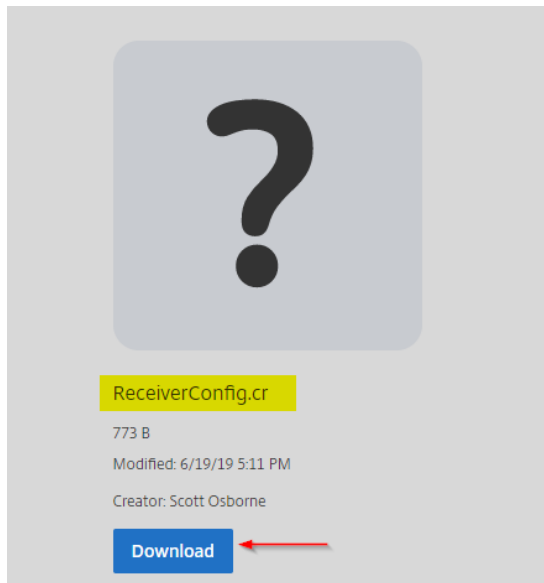
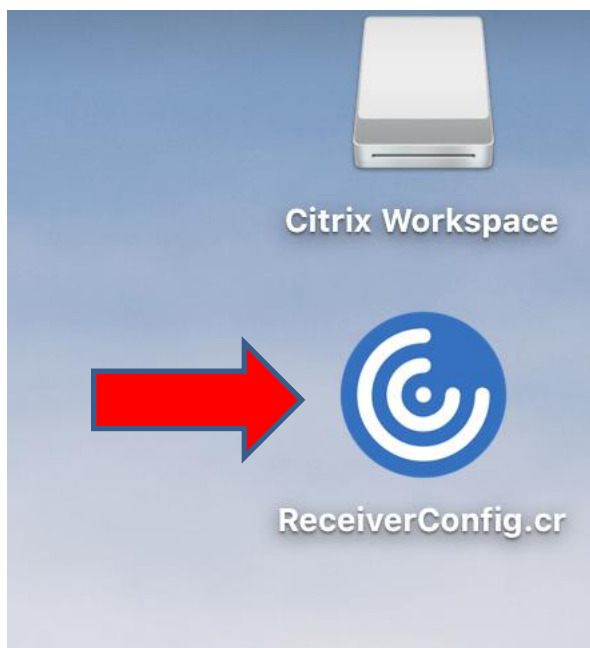


Updating Citrix Receiver/Workspace App for the new portal on a Mac computer

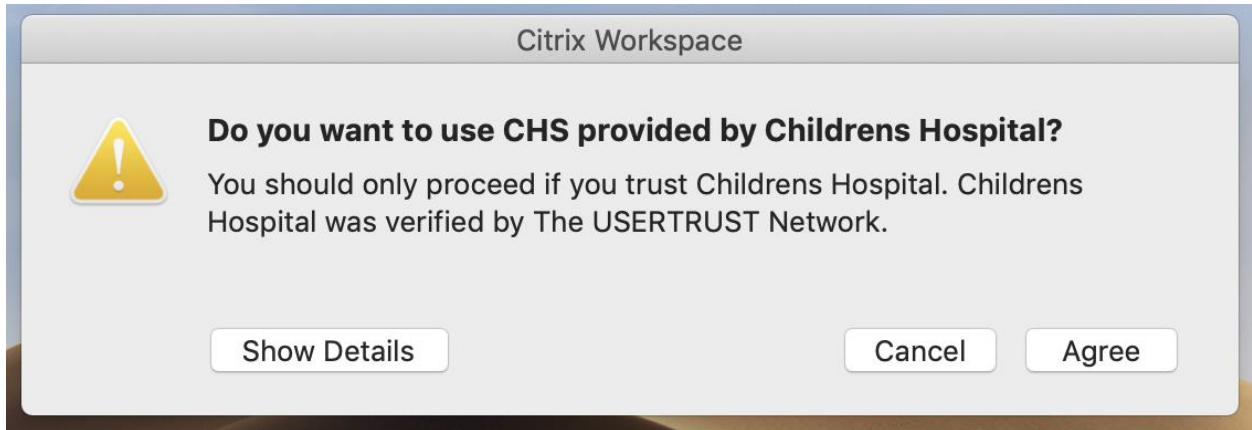
1. Click this link [ReceiverConfig.cr file](#), and then select download.



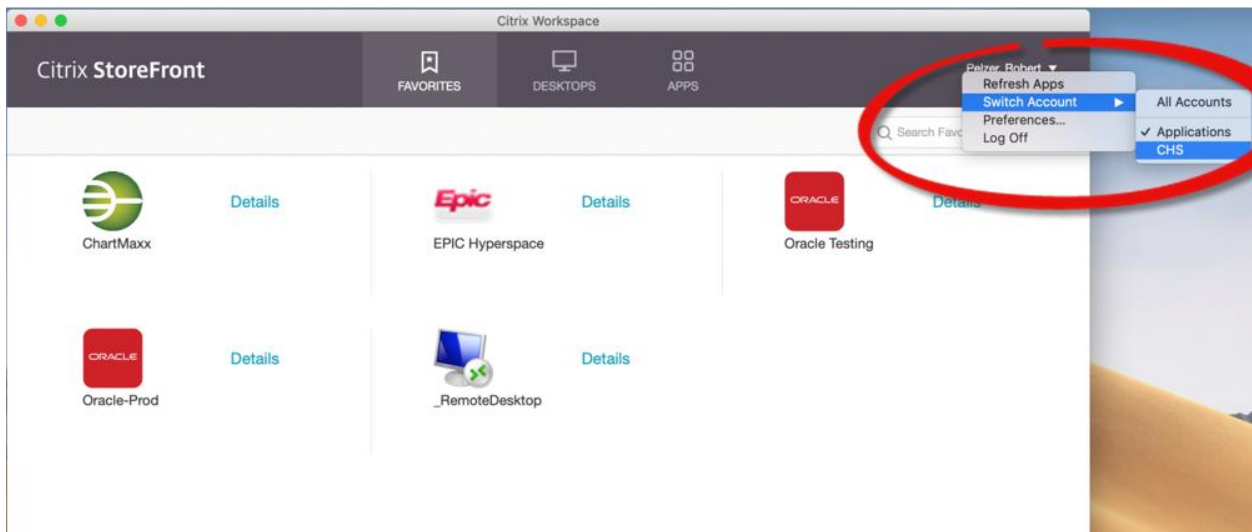
2. Once downloaded, double click on the file to open it.



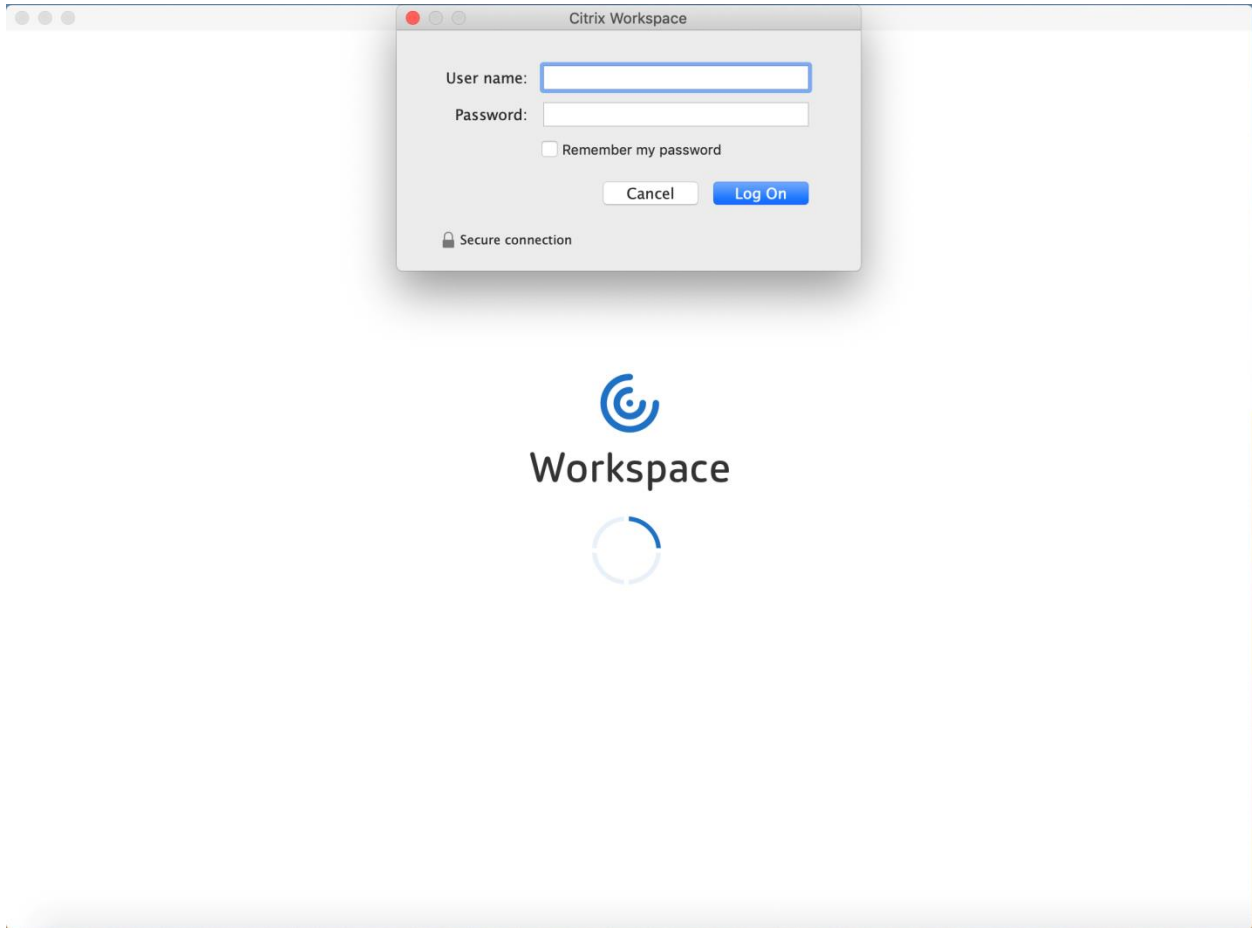
3. After launching, you will receive a prompt to trust the file from Children’s Hospital. Press Agree to continue.



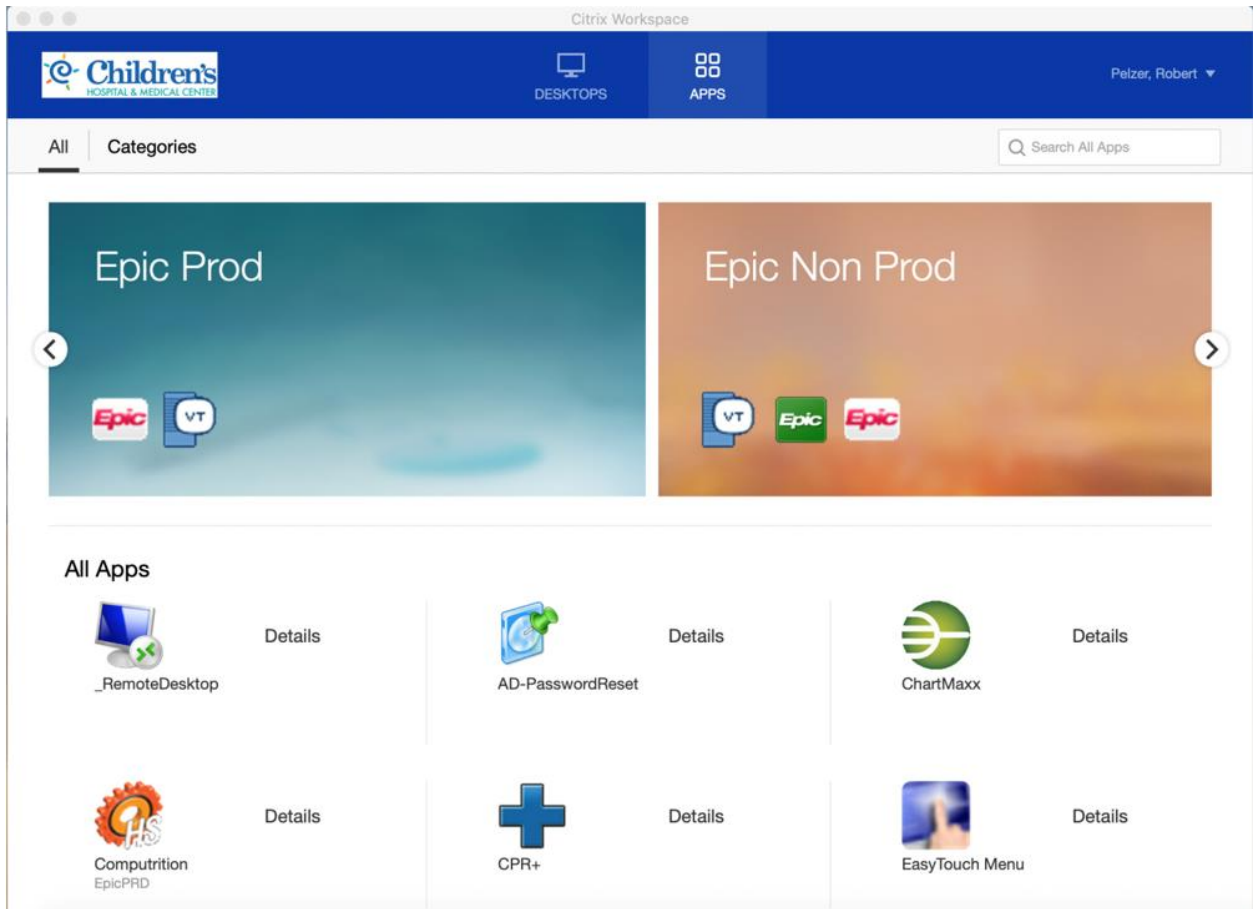
4. Citrix Receiver/Workspace App should launch automatically. Then click the down-arrow in the upper right corner of the screen, next to your name. Click “Switch Account”, then click “CHS”.



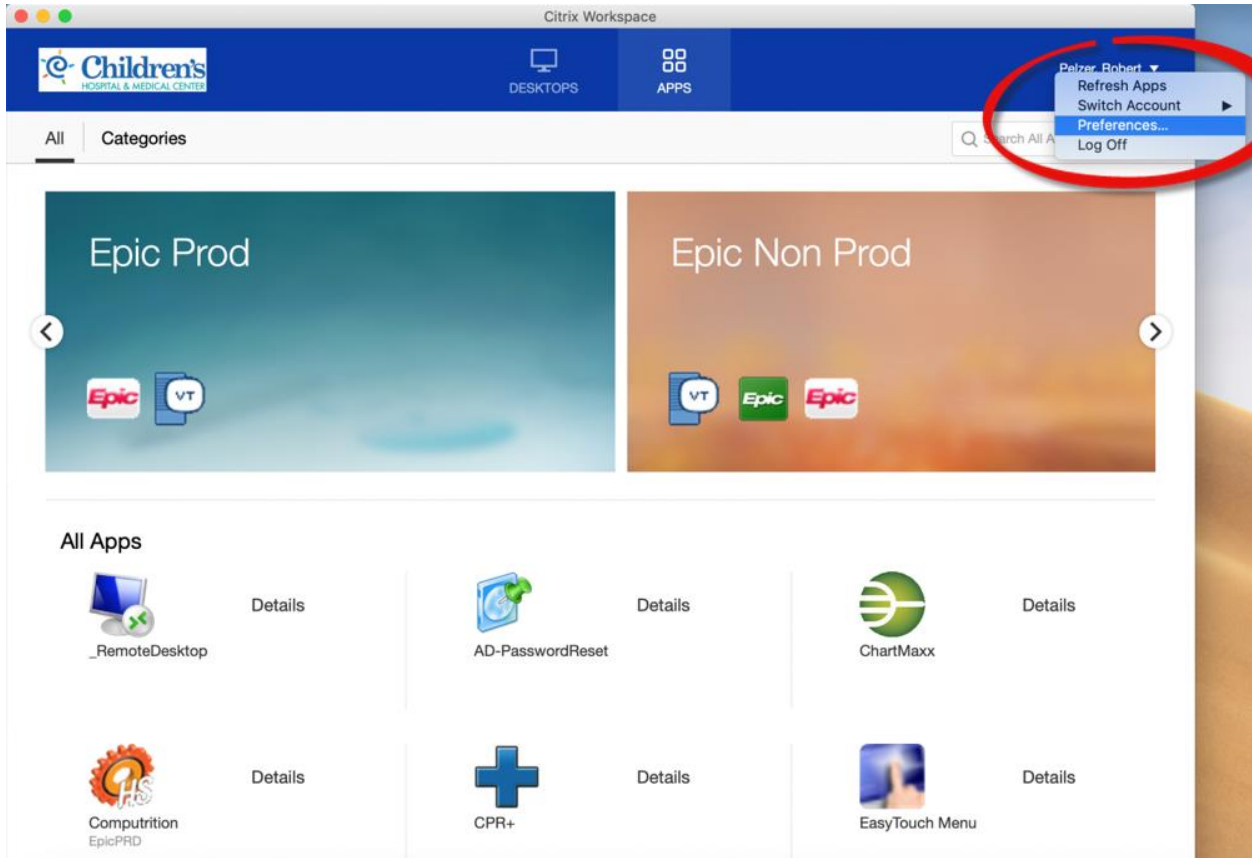
5. You will then receive a prompt to login. Use your normal domain username and password, then click "Log On".



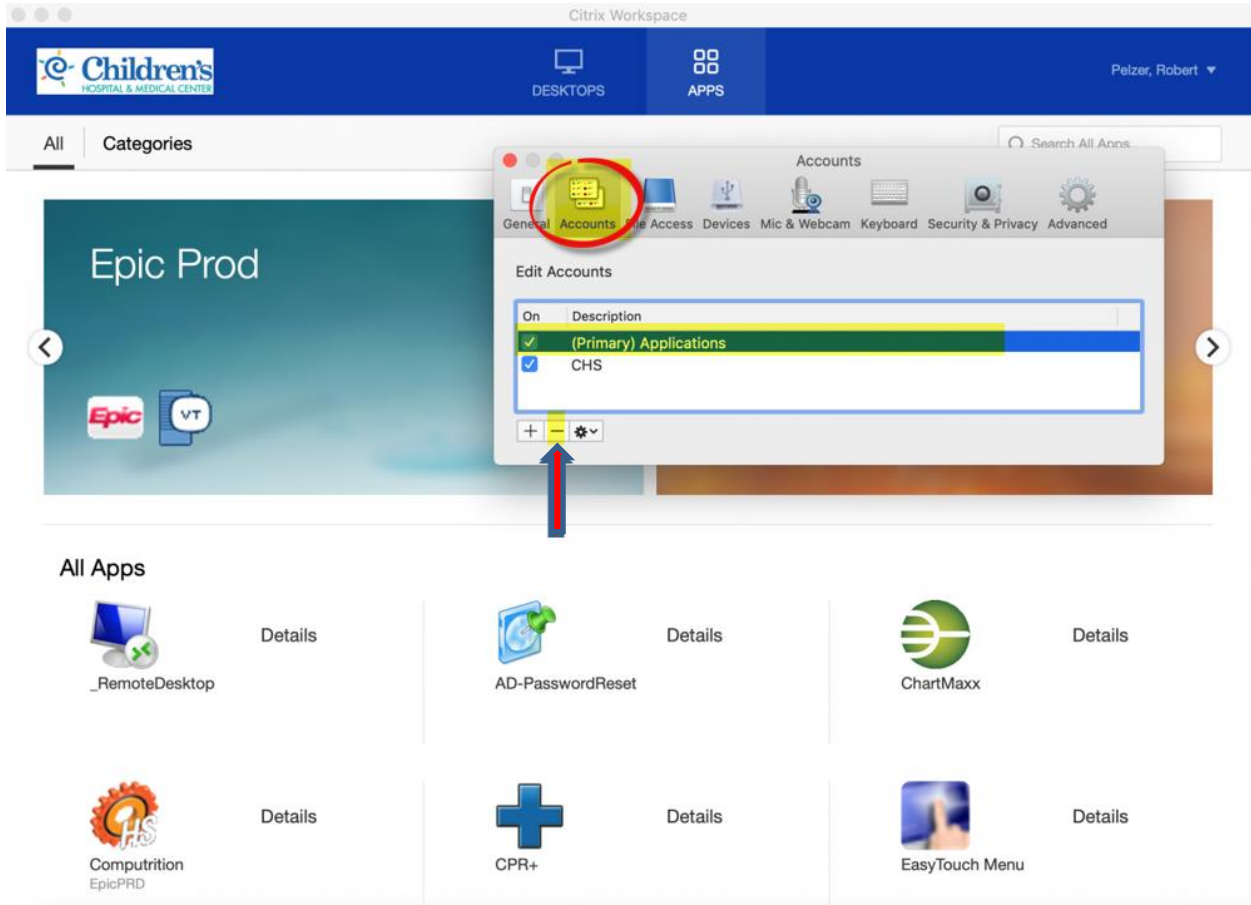
6. After logging in, you should see the new portal app screen as seen below.



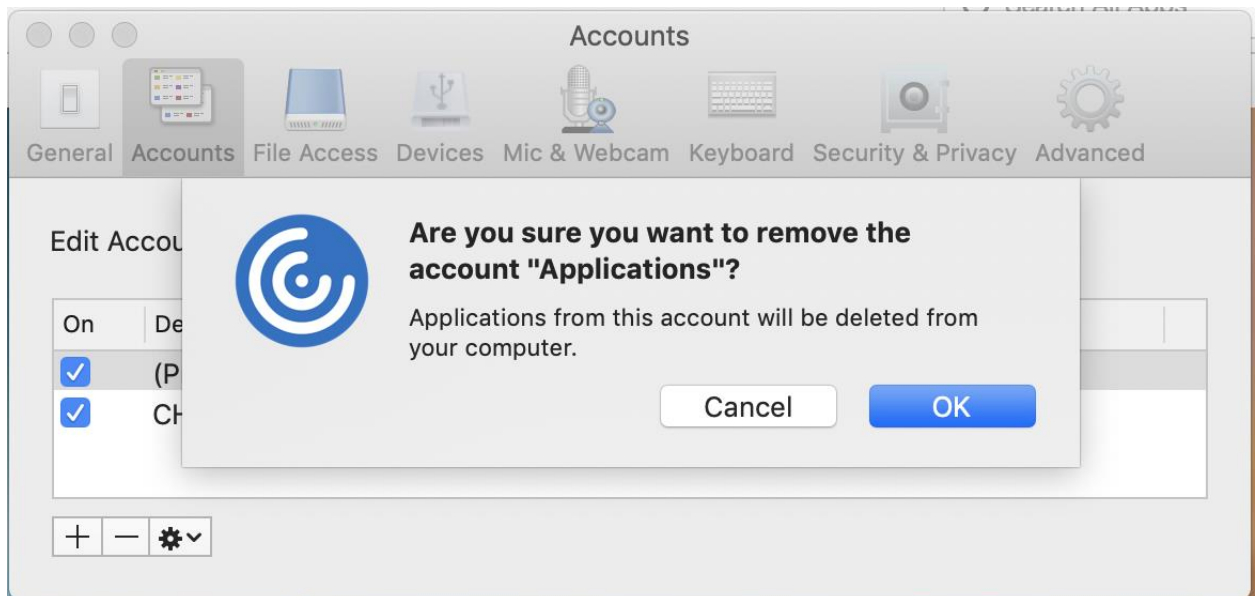
7. Click on the down-arrow next to your name in the upper right corner, and Select "Preferences...".



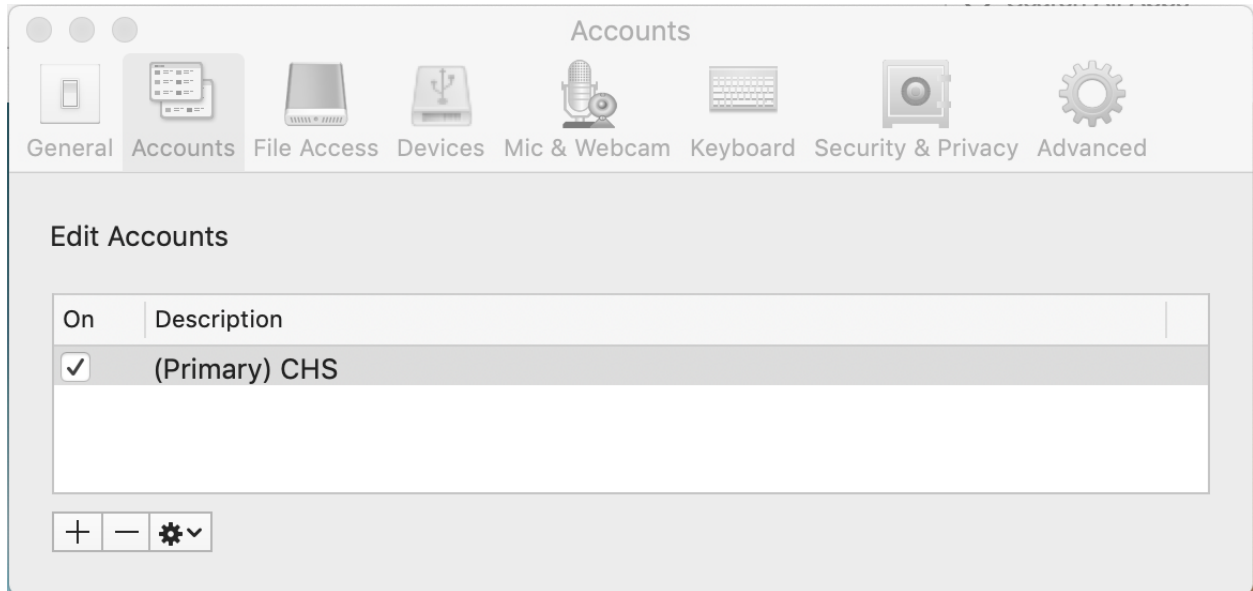
- Then select Accounts, (highlighted below) then select “(Primary) Applications”, and select the minus sign to remove the old portal app page.



- You will be prompted to remove the account “Applications”, press “OK”.



10. You should now see only the new “CHS” account and it will be listed as primary. Close the Accounts window to return to your published Citrix app page.



11. *Reminder* You will need to login through Citrix Receiver/Workspace rather than using the web browser(safari, chrome) going forward.